

  
**EMERALD**  
CRUISES

# LUXURY YACHT CRUISING

## 16 Day Kenya Safari & Seychelles Cruise





Get close up on safari



Meet the Maasai



Enjoy Seychelles beachcombing

## 16-Day Safari and Seychelles

Welcome to the adventure of a lifetime! Spot Africa's magnificent 'Big Five' on daily safari drives and immerse yourself in traditional Maasai culture amid Kenya's renowned game reserves. Discover a tropical paradise of spellbinding natural beauty and endemic fauna and flora as you cruise the Indian Ocean and Seychelles Islands onboard our luxury yacht.

### Day 1 Nairobi, Kenya

Welcome to Kenya. Upon arrival at the Jomo Kenyatta International Airport, you will be met and transferred to your hotel in Nairobi, Kenya's colourful capital city. Meet your Driver Guide and enjoy dinner at the hotel this evening.

Overnight Stay: Sarvoa Stanley Hotel, Nairobi

Meals included: Dinner

### Day 2 Nairobi – Samburu Game Reserve

Your African safari begins this morning as we head north via Nanyuki for the Samburu Game Reserve set in the rugged, semi-arid northern region of Kenya, with spectacular landscape. Your first safari drive is this afternoon. Samburu is visited by large herds of elephants. It is one of the best places to find several endemic Northern species, including the reticulated giraffe, the Somali ostrich and Grevy's Zebra. The Samburu culture is a fascinating one, sharing ancestral and linguistic ties to the Maasai.

Two-night Stay: Samburu Game Reserve

Meals Included: Breakfast, Lunch, Dinner

### Day 3 Samburu Game Reserve

Enjoy morning and afternoon game viewing drive. The Samburu region is a place of breath-taking beauty, where the vision of a deep red sunset silhouetting the doum palms along the river brings the perfect end to a day on safari.

Meals Included: Breakfast, Lunch, Dinner

### Day 4 Samburu Game Reserve – Lake Nakuru National Park

After breakfast depart for Lake Nakuru National Park with a brief stop at the Thompson Falls for a breath-taking view of the great scenery. The park is one of the best for game viewing including lions, Cape buffalo, waterbucks, warthogs, the endangered Rothschild giraffe, the endangered black & white rhino, the Burchell's zebra, impala, and the leopard. Over 300 bird species have been recorded here too.

Overnight Stay: Lake Nakuru National Park

Meals Included: Breakfast, Lunch, Dinner

### Day 5 Lake Nakuru National Park – Masai Mara Game Reserve

Visit the Mission in Action Orphanage and hear the stories of how it was started by an Australian family. Continue to the Masai Mara National Reserve — Kenya's most renowned game reserve offering wonderful scenery and plenty of wildlife. Arrive at your tented camp for lunch and a little bit of leisure time before you depart on an exciting game viewing drive. The rolling plains and grasslands, stretching far into the horizons is home to the black-maned lion, the savanna elephant, the Cape buffalo, wildebeest, leopard, cheetah, the spotted & striped hyena, the rhino, zebra, the Masai giraffe among many others.

Three Night Stay: Masai Mara Game Reserve

Meals Included: Breakfast, Lunch, Dinner

### Day 6 Masai Mara Game Reserve

Enjoy a full day in the Masai Mara with morning and afternoon game drives. Visit a traditional Maasai Village and experience the culture of this world-famous community. The Maasai still live as they did for centuries — interact with these nomadic people and learn about their customs and traditions. Dine under the stars tonight.

Meals Included: Breakfast, Lunch, Dinner

### Day 7 Masai Mara Game Reserve

Another day of game drives with an opportunity to see more of the 'Big Five' that Masai Mara is famous for. These include the lion, savanna (African) elephant, the Cape buffalo, the leopard and the black rhino.

Meals Included: Breakfast, Lunch, Dinner

### Day 8 Masai Mara Game Reserve – Nairobi – Mahé, Seychelles

Bid farewell to your Driver Guide before your included flight back to Nairobi this morning.

This afternoon a visit to the Giraffe Centre followed by the Karen Blixen Museum. Enjoy an early dinner at the Carnivore Restaurant before transferring to the airport for your included flight to the Seychelles.

Overnight Stay: Mahé Island

Meals Included: Breakfast, Dinner

### Day 9 Mahé Island – Sainte Anne Channel

Your tropical cruise begins in Mahé island, where you'll be transferred to your Emerald Cruises luxury yacht and embark on your discovery of the Seychelles. In the afternoon, we sail to Sainte Anne Channel.

Meals Included: Breakfast, Dinner

## Day 10 Sainte Anne Channel – Cousin Island – Praslin Island

Sainte Anne Island is encircled by a Marine National Park, home to incredible marine life including more than 150 species of fish. Sainte Anne is now a significant nesting site for Hawksbill turtles. Late morning, we sail to Cousin, a small island renowned as a haven for seabirds. It's the most protected island in the archipelago, providing a breeding ground for eleven sea bird species annually and a habitat for five birds native to the Seychelles. We stay overnight in Praslin.

Meals Included: Breakfast, Lunch, Dinner

## Day 11 Praslin Island

Praslin, the second largest island in the Seychelles, is visually stunning with tropical jungle-fringed beaches, emerald waters and powdery sand. Anse Lazio beach has been voted one of the world's best several times and there's a dazzling reef just offshore brimming with coral and marine life. On land, coconut palms and granite boulders create a picture-postcard landscape. In the centre of the island, discover the UNESCO World Heritage-listed Vallée de Mai Nature Reserve.

Meals Included: Breakfast, Lunch, Dinner

## Day 12 Praslin Island – La Digue Island – Curieuse Island

Early in the morning, we sail to La Digue Island, the smallest of the three populated islands in the Seychelles. Like Praslin Island, it also possesses world-famous beaches, with one of the most recognisable being Anse Source d'Argent. We will navigate to Curieuse later in the evening.

Meals Included: Breakfast, Lunch, Dinner

## Day 13 Curieuse Island

Curieuse is a rugged island swathed in unspoilt wilderness and home to hundreds of resident Aldabra giant tortoises. Apart from its obvious natural beauty, it has a fascinating history. It was once a quarantine station, and the original French colonial doctor's house has a museum and visitor's centre.

Meals Included: Breakfast, Lunch, Dinner

## Day 14 Curieuse Island – Aride Island

Early in the morning, we sail to Aride, a nature reserve in the Indian Ocean. Nature enthusiasts and wildlife photographers flock to this island, where more than thirty rare bird species nest in the verdant vegetation. The landscape is enticing with fine-sand beaches, coconut palms and soaring cliffs.

Meals Included: Breakfast, Lunch, Dinner

## Day 15 Mahé Island

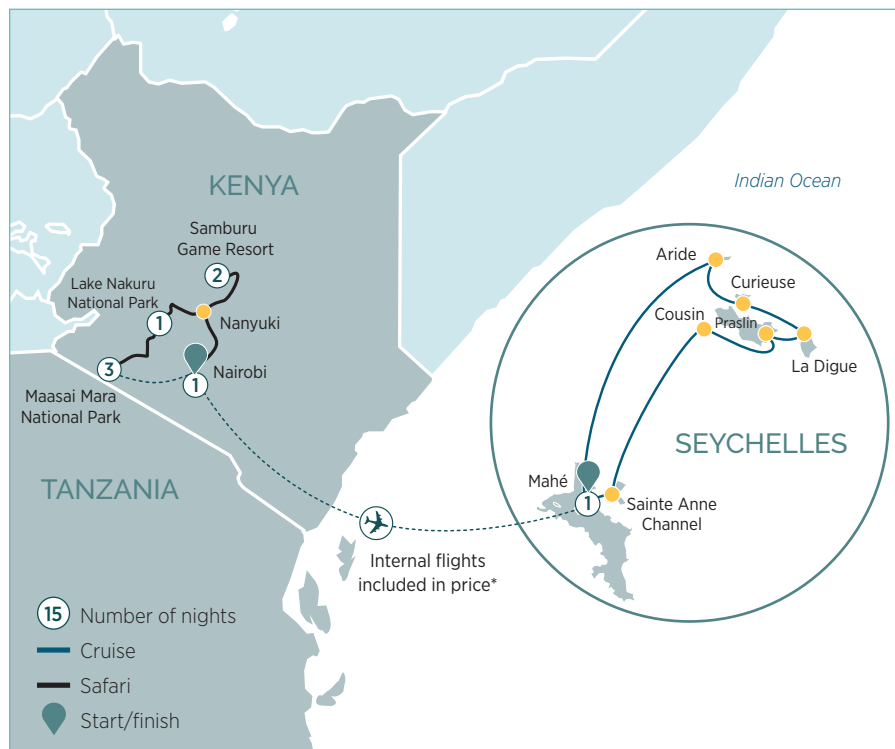
Mahé is the main island of the scenic Seychelles and the largest of the archipelago. It's home to the capital Victoria, which was founded in the French settler period in 1778 and named later by the British, after Queen Victoria. The island of Mahé has pristine beaches dotted with huge rocks and tranquil nature trails threaded through the Morne Seychellois National Park.

Meals Included: Breakfast, Lunch, Dinner

## Day 16 Mahé Island

Your Emerald Cruises voyage concludes in idyllic Mahé island. From the yacht, you will be transferred to the airport for your journey home or to continue your holiday.

Meals Included: Breakfast



## Your EmeraldDISCOVERY Inclusions:

- Multiple opportunities to see the 'Big Five' (Lion, Elephant, Buffalo, Leopard, and Rhino)
- Three nights in the Masai Mara
- Visit a traditional Maasai Village
- Sundowner drinks at Lake Nakuru
- Discover the Out of Africa story at the Karen Blixen Museum
- Explore eight islands with their spectacular Seychelles landscapes
- The breathtaking Aride nature reserve, inhabited only by island rangers and a breeding site for Indian Ocean seabirds & sea turtles
- Enjoy included **EmeraldACTIVE** & **EmeraldPLUS** experiences
- 40 superb meals & complimentary drinks when yacht cruising
- All tips, gratuities & port charges
- For full details visit [emeraldcruises.com.au](http://emeraldcruises.com.au)

## 16-Day Safari and Seychelles

Departure Dates  
Journey Code: **YX01**

			2024 Dec 21, 28			2024 Dec 29* 2025 Jan 04, 05*, 11, 12*, 18, 19*, 25, 26*, Feb 02*		
CAT	Stateroom/Suite	Deck	Super Earlybird Fare from	Earlybird Fare from	Full Fare from	Super Earlybird Fare from	Earlybird Fare from	Full Fare from
D	Oceanview Stateroom	3	\$14,545	\$16,045	\$17,045	\$14,195	\$15,695	\$16,695
B	Balcony Suite	4	\$16,315	\$18,065	\$19,315	\$15,965	\$17,715	\$18,965
Y	Yacht Suite	4	\$20,785	\$22,785	\$24,285	\$20,435	\$22,435	\$23,935
A	Balcony Suite	5	\$16,880	\$18,630	\$19,880	\$16,530	\$18,280	\$19,530
T	Terrace Suite	5	\$20,465	\$22,465	\$23,965	\$20,115	\$22,115	\$23,615
S	Deluxe Balcony Suite	6	\$18,700	\$20,450	\$21,700	\$18,350	\$20,100	\$21,350
SA	Owner's Suite	6	\$28,410	\$31,410	\$33,410	\$28,060	\$31,060	\$33,060

**SUPER EARLYBIRD fares must be paid in full 10 months prior to departure\***

**EARLYBIRD fares valid until 6 months prior to departure\***

\*These dates operate a reverse itinerary. To help you select your cabin, deck plans can be found overleaf.

**Terms & Conditions:** All prices are per person in AUD, based on a twin share accommodation and subject to availability. Internal flights are included between Masai Mara & Nairobi, Nairobi & Mahé. On specific airline and class, if not available a surcharge may apply. Deposit or full payment per person is due within 7 days of booking to secure cabin. Super Earlybird fares must be paid in full 10 months prior to departure. Earlybird fares must deposit within 7 days of booking and fare is only valid until 6 months prior to departure. All Super Earlybird/Earlybird fares are limited in number and can be withdrawn or adjusted at any time. Once sold out the full fare will apply. Itinerary arrival/departure times, highlights and inclusions are subject to change without notice. For full terms & conditions see [www.emeraldcruises.com.au](http://www.emeraldcruises.com.au)

# Emerald Azzurra Deck Plans

## Launched:

Emerald Azzurra 2022

**Length:** 360.9ft (110m)

**Guests:** 100

**Cabins:** 50

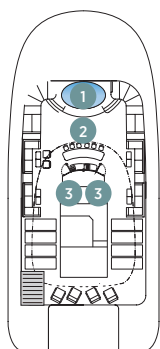
**Crew Members:** 76

- 1 Spa Pool
- 2 Sky Bar
- 3 Lifts
- 4 Aqua Café
- 5 Aqua Pool
- 6 Navigation Bridge
- 7 Life Boats
- 8 Observation Lounge

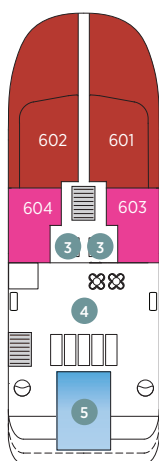
- 9 Observation Terrace
- 10 Self-service Laundry
- 11 Amici Bar & Lounge
- 12 Reception
- 13 Boutique
- 14 La Cucina Dining
- 15 La Cucina Terrace
- 16 Medical Centre

- 17 Gym
- 18 Infrared Sauna
- 19 Elements Spa
- 20 Hairdressers
- 21 Tender Boats
- 22 Water Sports Boat
- 23 Garage
- 24 Marina Platform

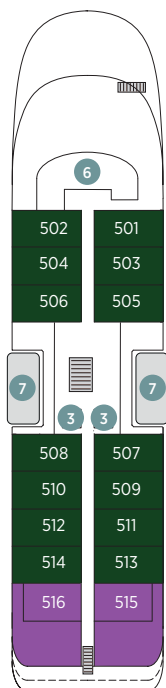
**Deck 7  
Sky Deck**



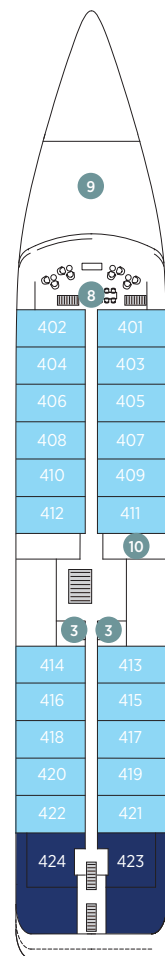
**Deck 6  
Pool Deck**



**Deck 5  
Panorama Deck**



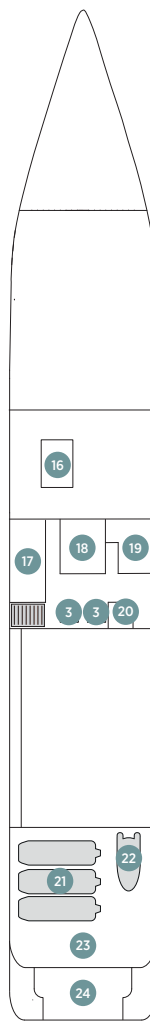
**Deck 4  
Observation Deck**



**Deck 3  
Emerald Deck**



**Deck 2  
Wellness Deck**



## Cabin Categories

Pool Deck	Size (m²)
<b>SA</b> Owner's Suite	108.8m² – 110.8m²
<b>S</b> Deluxe Balcony Suite	35.5m² – 37.5m²
Panorama Deck	Size (m²)
<b>T</b> Terrace Suite	60.2m² – 62.2m²
<b>A</b> Balcony Suite	26.5m² – 28.5m²
Observation Deck	Size (m²)
<b>Y</b> Yacht Suite	65m² – 67m²
<b>B</b> Balcony Suite	26.5m² – 28.5m²
Emerald Deck	Size (m²)
<b>D</b> Oceanview Stateroom	17m² – 19.5m²

## Reservations & Enquiries

Contact Australia wide at a local call cost.

**1300 286 110**

or contact your Local Travel Advisor.

Book online visit or contact

[emeraldcruises.com.au](http://emeraldcruises.com.au) | [hello@emeraldcruises.com.au](mailto:hello@emeraldcruises.com.au)

## Australasia Head Office

25 Watt Street, NEWCASTLE NSW 2300 Australia



Cruises operated by Emerald Cruises®  
(A division of Scenic Tours Pty Ltd. ABN 85 002 715 602).

Brochure Code: DE/YX01/AUD2425

YOUR LOCAL EMERALD CRUISES TRAVEL ADVISOR